

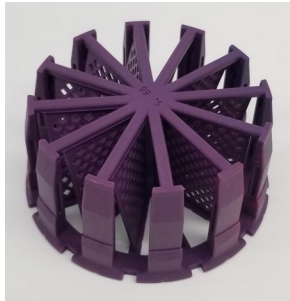
# PRIMARY MFG

## UMA90 DLS

Inexpensive

Colorful

Similar to conventional SLA resins



For models, prototypes, fixtures, and jigs nothing beats UMA90. Low build times and minimal post processing means parts can be made cheaply, but still come out looking great. UMA90 also comes in any CMYK color.

**Tensile strength** 46 ± 3 MPa

**Elongation at break** 17 ± 2%

**Flexural strength** 79 ± 5 MPa

**Impact Strength** 33 ± 4 J/m  
Notched Izod (machined)

**Hardness** 86, Shore D

